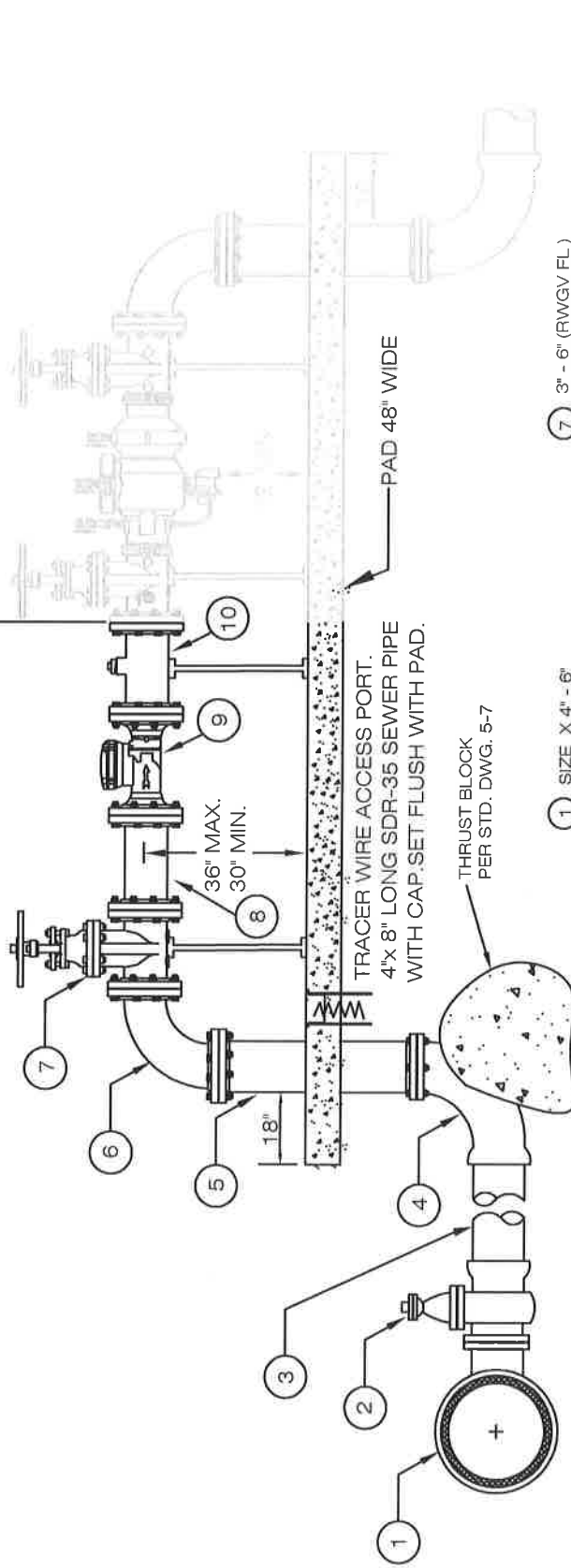


END OF DISTRICT RESPONSIBILITY
 BEGINNING OF CUSTOMER
 RESPONSIBILITY.
 SEE STANDARD DWG. 1-8

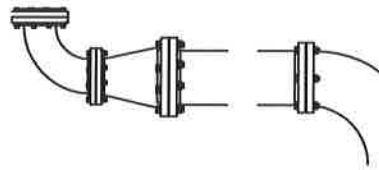


- ① SIZE X 4" - 6"
- ② 4" - 6" (RWGV FL X PO)
- ③ 4" - 6" DR14 (305)
- ④ 4" - 6" FL x PO 90 DEGREE ANGLE
- ⑤ 4" - 6" DUCTILE IRON SPOOL
- ⑥ 3" - 6" FL 90 DEGREE ANGLE
- ⑦ 3" - 6" (RWGV FL)
- ⑧ 3" - 6" X 12" EPOXY COATED SPOOL (BLUE)
- ⑨ METER
- ⑩ 3" - 6" X 12" EPOXY COATED SPOOL (BLUE) WITH 2" FIP TEST PORT WITH BRASS 2" PLUG

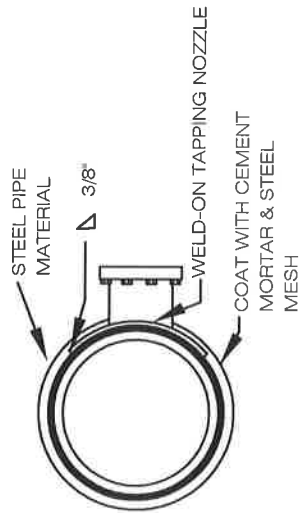
NOTES

- A) WHEN 3" METER IS REQUIRED A 4" LATERAL MUST BE INSTALLED. AND REDUCED ON 4" RISER. (SEE DETAIL "A")
- B) AN APPROVED FENCE MUST BE INSTALLED AROUND METER. FENCE SUBMITTAL AND DRAWING MUST BE SUBMITTED & APPROVED PRIOR TO INSTALLATION. FENCE SHALL BE OWNED AND MAINTAINED BY CUSTOMER.
- C) ALL WELDED JOINTS TO BE CEMENT COATED INSIDE AND OUTSIDE OF PIPE.
- D) FOR INSTALLATION OF RP DEVICE SEE STANDARD DWG. 1-8
- E) (W) LEGEND ON PLANS

INSTALLATION TO A.C.
 OR PVC WATER LINE



DETAIL "A"



INSTALLATION TO
 CML&C WATER LINE

REVISIONS	APPROVED	DATE
	J. AMODEO	12/02/99

VISTA IRRIGATION DISTRICT
 3" THROUGH 6"
 ABOVE GROUND
 METER INSTALLATIONS

Brian Smith 1/24/17
 BRIAN SMITH DATE
 R. C. E. 39926
 STANDARD DRAWING 1-9